



SPOT OFFICES

SPOT is a large-scale redevelopment of the Bullewijk office park in Amsterdam Zuidooost. SPOT will become a new cosmopolitan district with an Amsterdam character. The program consists of five alternating high-rise residential towers with fantastic views of the city, and low-rise buildings surrounding intimate squares and green streets. In addition to approximately 11,359 m² of office space, a total of 1,095 new homes will be built, consisting of a mix of ownership and rental properties with various living areas, as well as a wide range of amenities such as shops, restaurants, and other facilities, including a daycare center.

LOCATION

Amsterdam Zuidooost has long been a hub for growth and innovation in the city. As a crucial part of one of the most popular locations in the Amsterdam metropolitan region, SPOT is vital for the development of Amsterdam Zuidooost, improving the landscape while maintaining the unique cultural ambiance. SPOT offers excellent accessibility with optimal connections that simplify commuting to other parts of Amsterdam and beyond.

ACCESSIBILITY

By Car

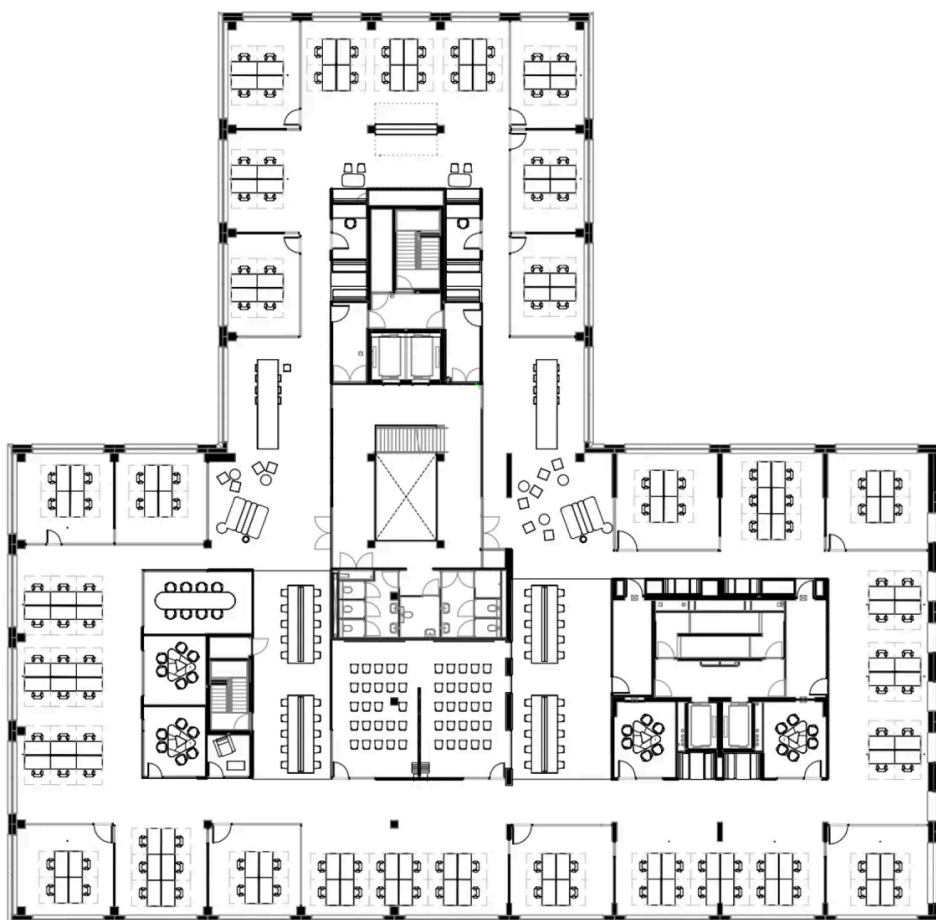
The building is easily accessible by car and is just a few minutes away from the A2 and A9 highways. This provides excellent access to the A1 and A10 highways as well.

By Public Transport

The Bullewijk metro station is just a few minutes' walk away. From NS statio...

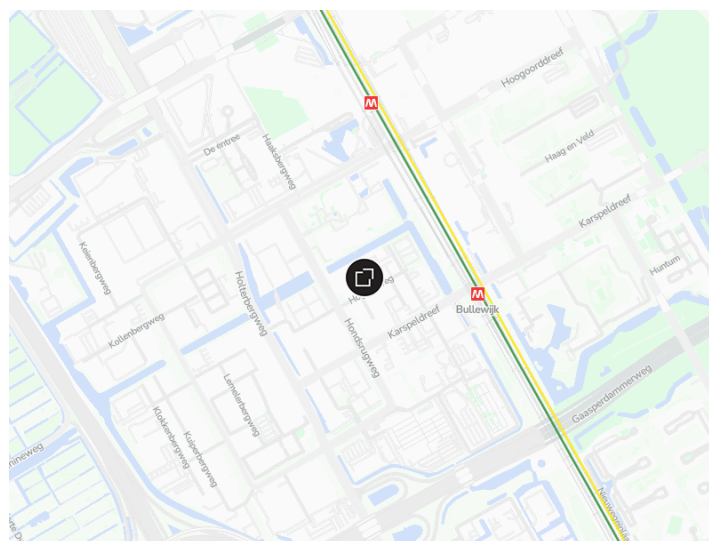
Dettagli immobile

Codice	ONL-2449
Contratto	Locazione
Zona	Zuidoost
Superficie	da 38 m ² a 11.801 m ²
Classe energetica	A+++
Disponibilità	Immediata



Superfici disponibili

Nome	Uffici
SPOT I - P6	360 m ²
SPOT I - P5	362 m ²
SPOT I - P4	1.923 m ²
SPOT I - P3	1.920 m ²
SPOT I - P2	1.923 m ²
SPOT I - P1	1.933 m ²
SPOT I - PM	179 m ²
SPOT I - PT	154 m ²
SPOT II - P3	463 m ²
SPOT II - P2	1.289 m ²
SPOT II - P1	1.295 m ²



Collegamenti

Ferrovie

Bus/Tram

Metro

- Amsterdam Bijlmer ArenA - 13' A piedi
- Bus 120, 126, 171, 255, 276, 277, 278, 300, 356, 370, N30, N85 - 3' A piedi
- Metro Bullewijk - 6' A piedi